

Continental Shelf Beyond 200 Miles: Comments

- Challengers for the CLCS
- Recent Developments
 - Australia's submission and recommendations
 - Indonesia's partial submission
 - Arctic claims
- Future concerns

University of Wollongong



Challenges for the CLCS

- Gamekeepers or facilitators?
- What if a coastal State accepts CLCS recommendations in principle but ignores them in practice?
- The workload of the Commission
 - c.65 potential submissions
 - Over 50 with a deadline in May 2009
 - At current rate of progress and assuming 65 submissions, process likely to take until 2035
 - How can this pace of progress be enhanced

University of Wollongong



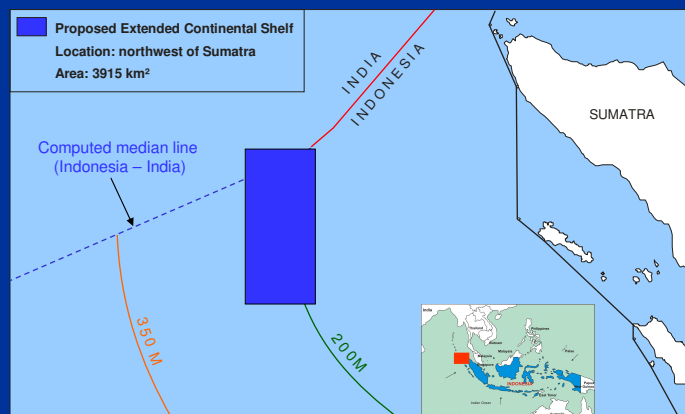
Australia's Submission

- Ten years in preparation
- Very large. On copy:
 - 868 separate documents
 - Approx. 19,000 pages (mainly colour)
 - 116 A0 maps
 - 331 seismic section (approx 1.5 km)
 - c.4,200 outer limit points
 - 10 areas of extended shelf each with own GIS
- Highly successful (95% of claimed area secured)
- Overly rigorous/comprehensive/expensive?

University of Wollongong



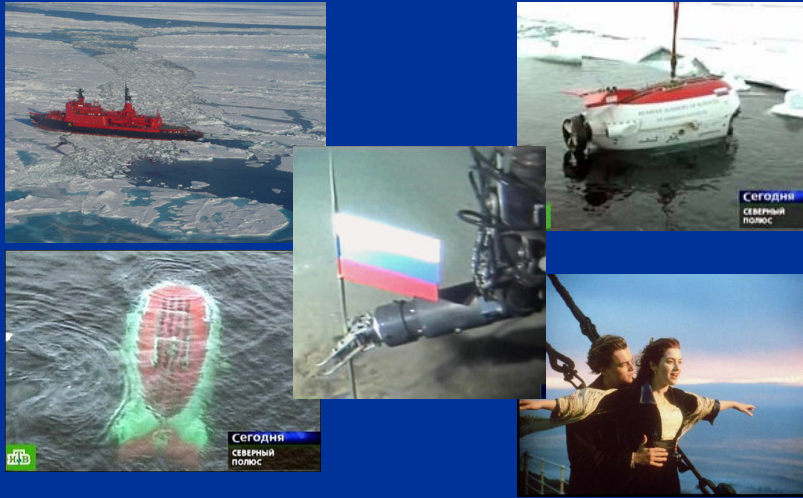
Indonesia's Submission



University of Wollongong



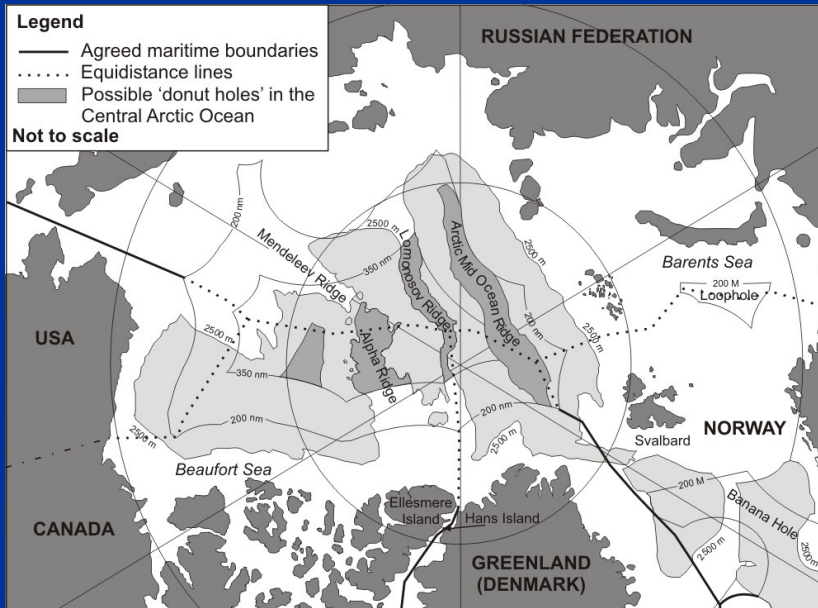
Arctic Antics



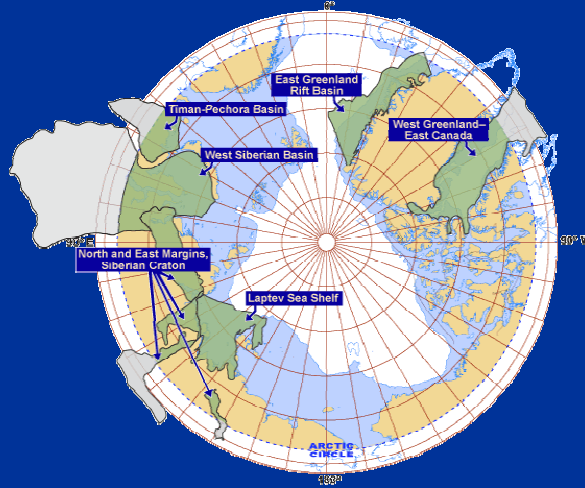
University of Wollongong



Arctic Extended Continental Shelf Claims



USGS Circum-Arctic Resource Appraisal



Implications for resource and environmental Management of continental shelf areas beyond 200 nautical miles from the coast

